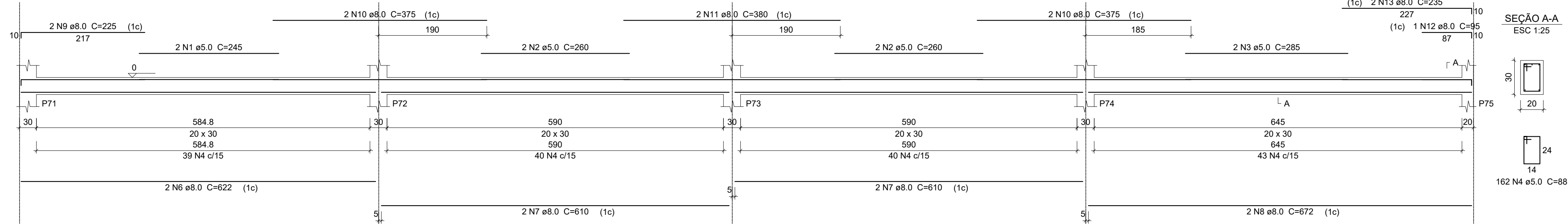


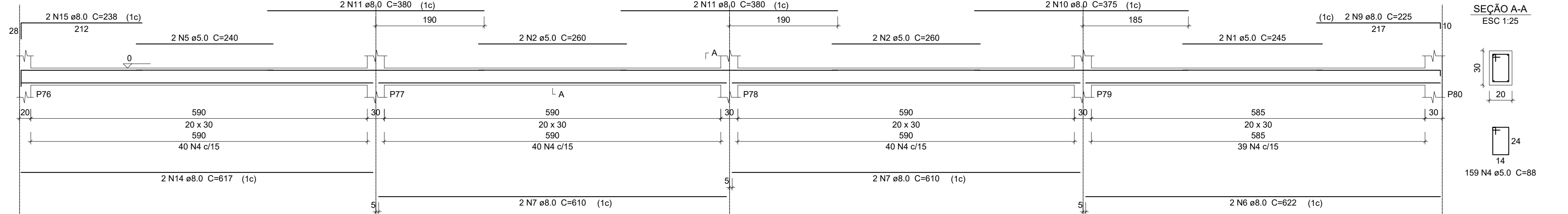
V15

ESC 1:50



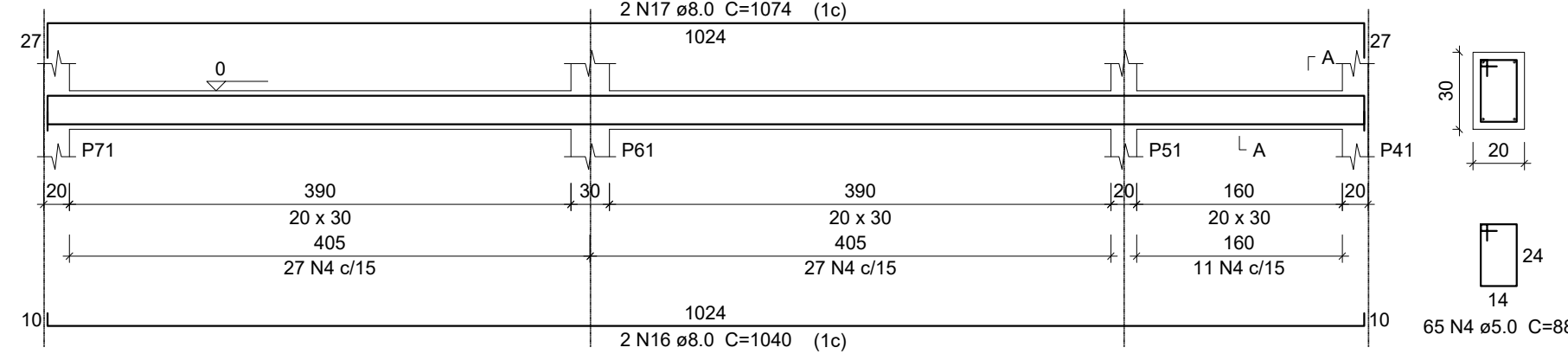
V16

ESC 1:50



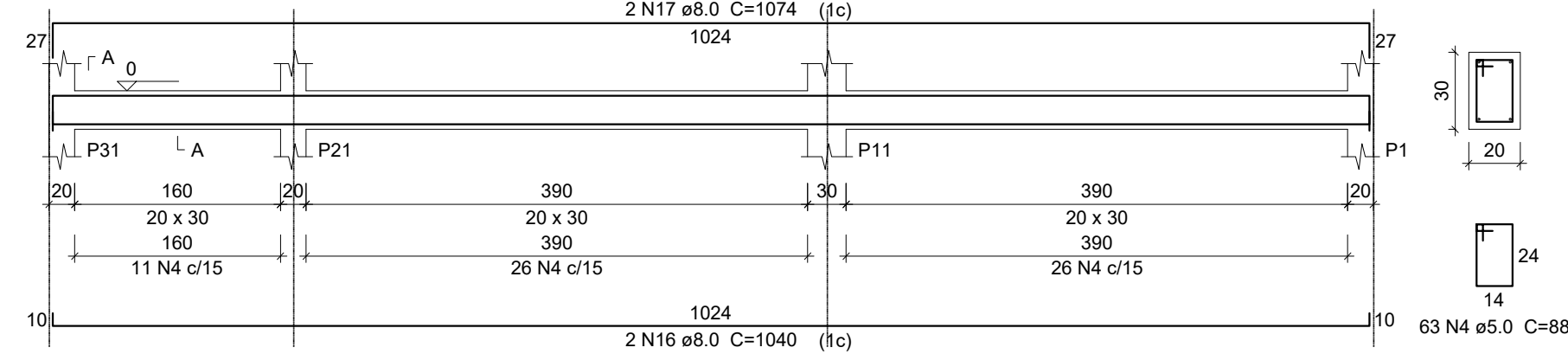
V17

ESC 1:50



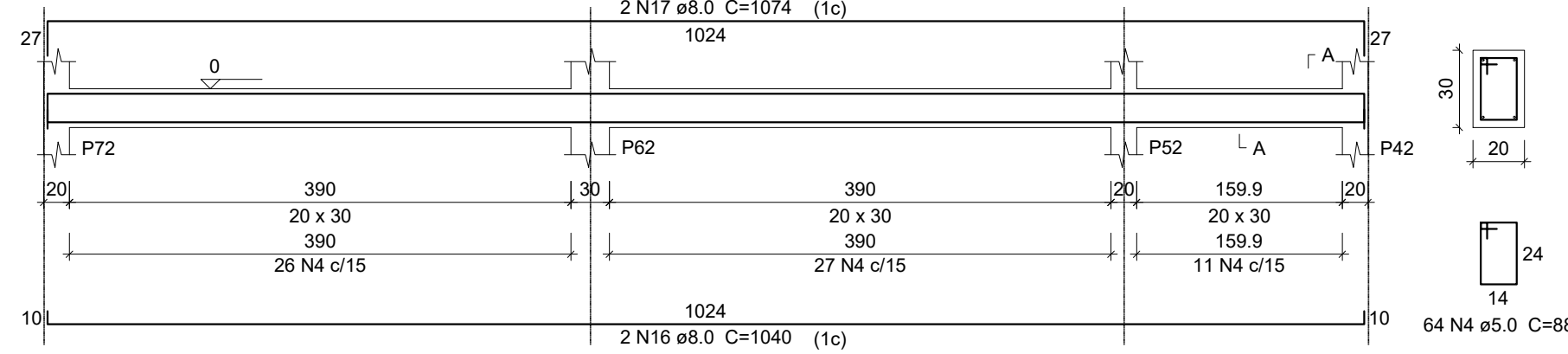
V18

ESC 1:50



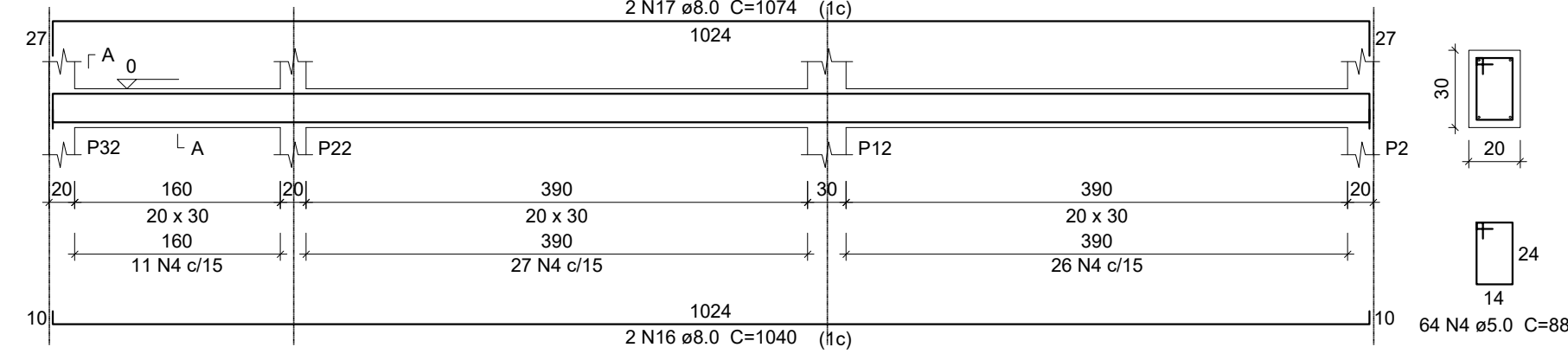
V19

ESC 1:50



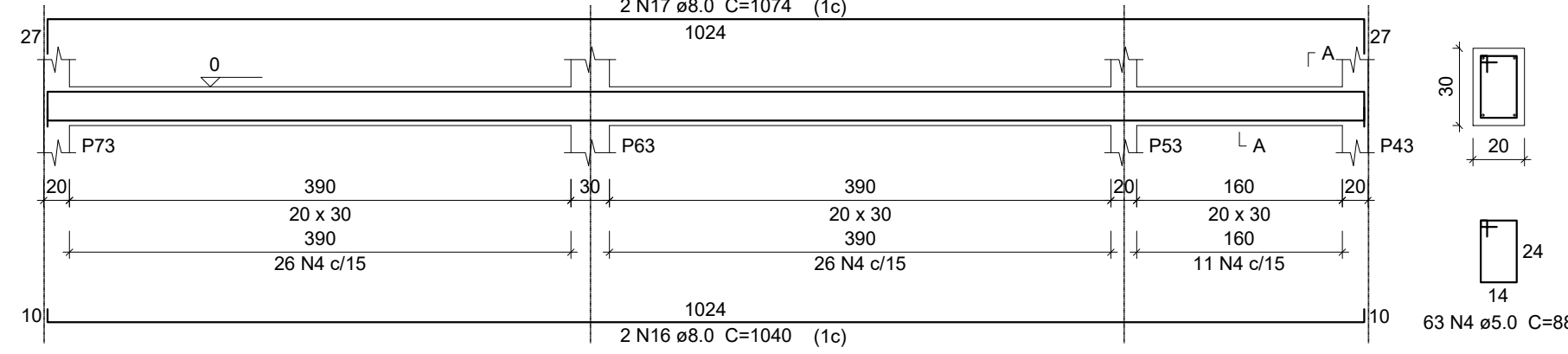
V20

ESC 1:50



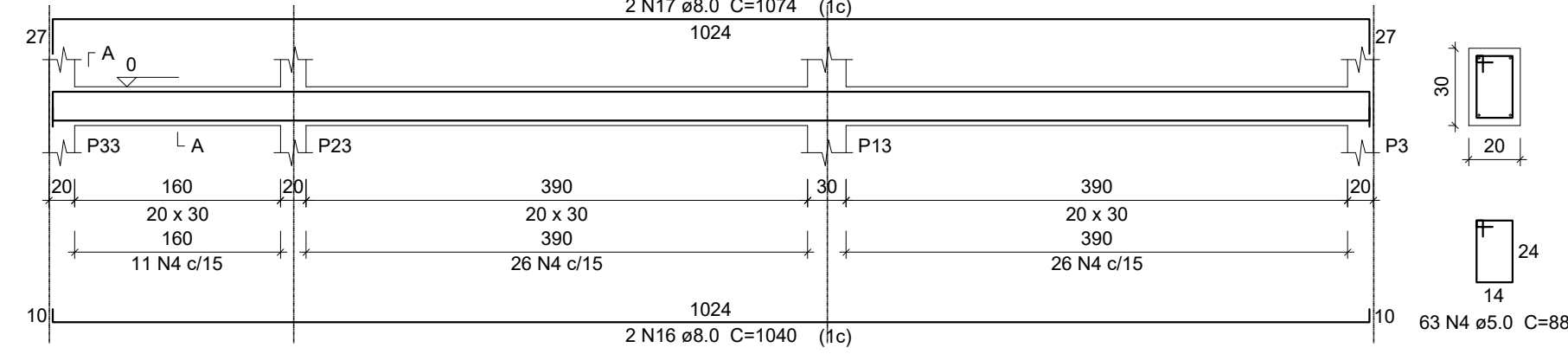
V21

ESC 1:50



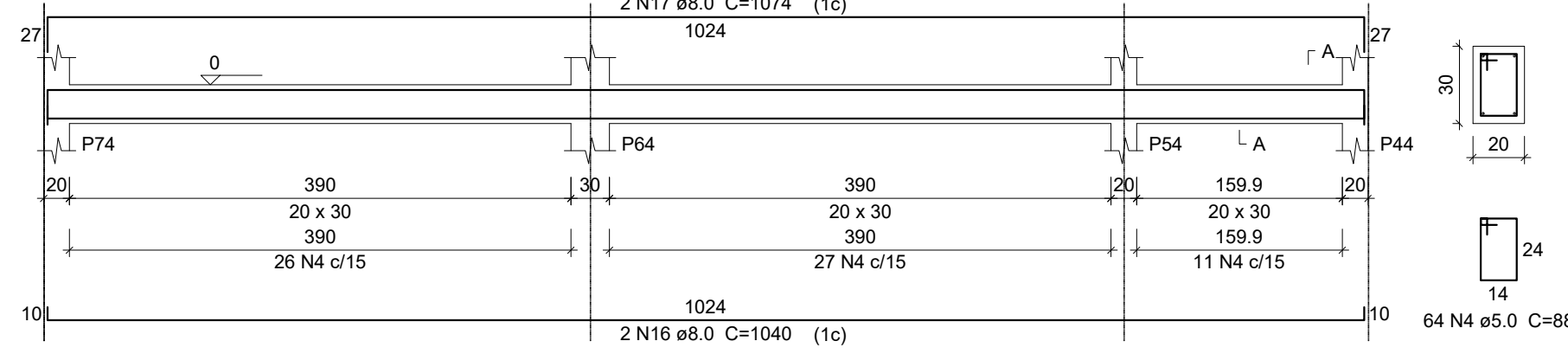
V22

ESC 1:50



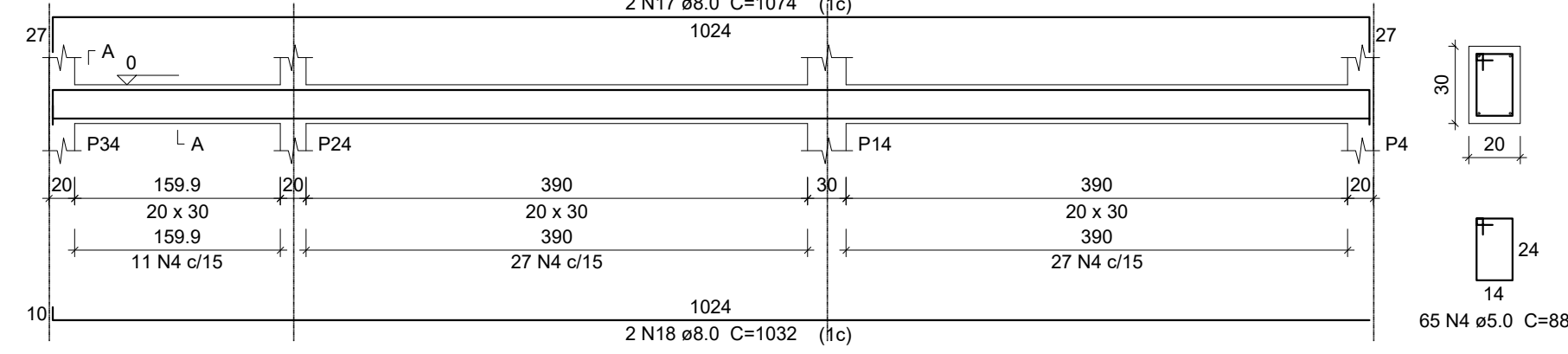
V23

ESC 1:50



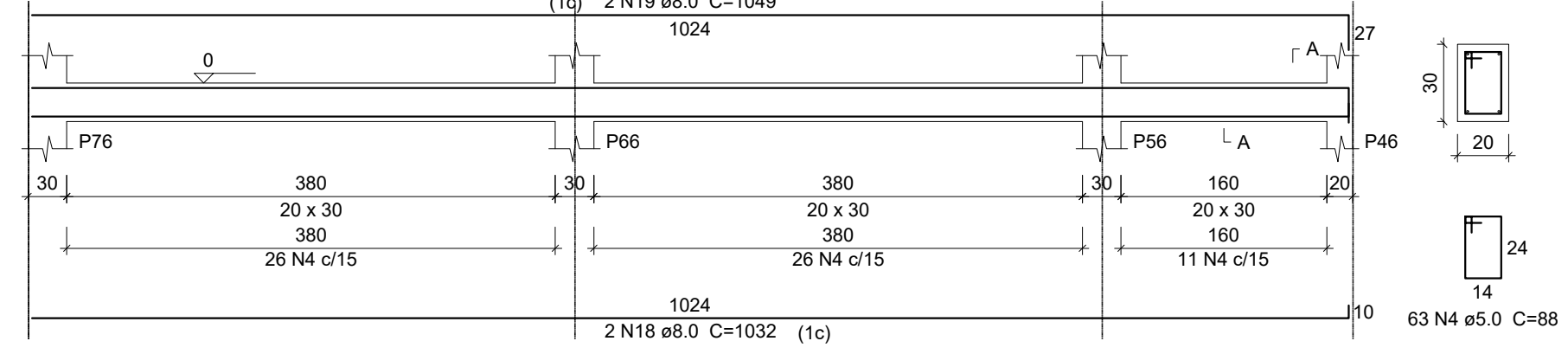
V24

ESC 1:50



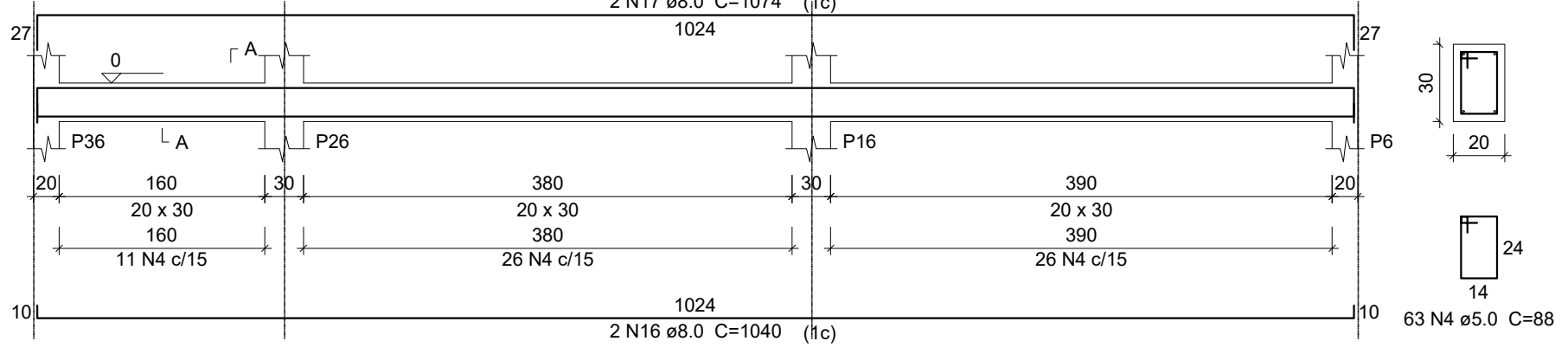
V26

ESC 1:50



V27

ESC 1:50



Relação do aço

AÇO	N	DIAM (mm)	QUANT	C.UNIT (cm)	C.TOTAL (cm)
V15	V16	V17			
V18	V19	V20			
V21	V22	V23			
V24	V26	V27			
CA60	1	5.0	4	245	980
	2	5.0	8	260	2080
	3	5.0	2	285	570
	4	5.0	958	88	84304
	5	5.0	2	240	480
CA50	6	8.0	4	622	2488
	7	8.0	8	610	4880
	8	8.0	2	672	1344
	9	8.0	4	225	900
	10	8.0	6	375	2250
	11	8.0	6	380	2280
	12	8.0	1	95	95
	13	8.0	2	235	470
	14	8.0	2	617	1234
	15	8.0	2	238	476
	16	8.0	16	1040	16640
	17	8.0	18	1074	19332
	18	8.0	4	1032	4128
	19	8.0	2	1049	2098

Resumo do aço

AÇO	DIAM (mm)	C.TOTAL (m)	PESO + 10 % (kg)
CA50	8.0	586.2	254.4
CA60	5.0	884.2	149.9
PESO TOTAL (kg)			
CA50		254.4	
CA60		149.9	

Volume de concreto (C-25) = 9.21 m³
Área de forma = 122.76 m²



Prefeitura

Campos de Júlio



Semeando

desenvolvimento

Departamento de Engenharia

Avenida Valdir Mazutti, nº 1999, Bom Jardim - Campos de Júlio
Fone:0xx65-3387-2800

Obras: CONSTRUÇÃO DE CENTRO DE EDUCAÇÃO INFANTIL COM 14 SALAS DE AULA Localizado na Av. Gov. Júlio Campos Quadra 01

Área: Área a Construir 1.967,40 m²

Prefeitura Municipal de Campos de Júlio

Responsável Técnico LUIZ CARLOS CORREIA DE OLIVEIRA CREA: 1202470122

Conteúdo: ESTRUTURAL VIGAS

DECLARO QUE A APROVAÇÃO DO PROJETO NÃO IMPLICA NO RECONHECIMENTO POR PARTE DA PREFEITURA DO DIREITO DE PROPRIEDADE DO TERRENO.

Data: MAIO/2022

Escala: INDICADAS

Desenho: CINTYA VIEIRA SOUTO

Folha: